

NCFE T LEVEL HEALTH

MY INTRODUCTION TO NCFE T LEVEL HEALTH WORKBOOK

My name is:

I am studying at:

The pathway I am going to study is:



REFLECTION

We hope you enjoy completing this Introduction to NCFE T Level Health Workbook. When you have completed all the tasks, take 2 minutes to complete the student columns in the reflection below.

Task	Student		Teacher	
	My Strengths	My Challenges	Your Strengths	Your Challenges
A1				
A2				
A3				
A4				
B1				
B2				
B3				
B4				

TASK A1

THE HEALTHCARE ALPHABET

Can you complete the alphabet grid? You must list at least one term for every letter of the alphabet. Each term must be either a healthcare service, healthcare professional, or a health condition or disease.

STEP 1...

What do you know already?

Use a black pen to complete as many terms as you can from your pre-existing knowledge.

STEP 2...

How good are your research skills?

Use a different coloured pen to fill in the gaps by using the internet to research.

A	B	C	D	E
F	G	H	I	J
K	L	M	N	O
P	Q	R	S	T
U	V	W	B	X
Y	Z			

TASK A2

CAREERS IN THE HEALTHCARE SECTOR

You may already know what career you would like to pursue in the future, or you may have a few options in mind. To complete this task, you must choose one career to create a fact file on, by completing the template below.

Help with this task:

There are more than 350 careers available within the NHS. These range from clinical roles to management and administration.

You can explore them all here:



The T Level Health prepares you to either:

- Enter the healthcare workforce at the health assistant level; or
- Undertake further study at Level 4 or 5 to work at the health practitioner level; or
- Undertake further study at degree level to become a health professional

You can learn more about what each of these levels means by looking at the Institute for Apprenticeships and Technical Education (IfATE) occupational map for health and science here:



Job Title	
Where do they work?	
Summarise the role in one sentence	
List some of the main responsibilities of the job	
List the skills required to be successful in this job	
What qualifications and training are required for this job	

TASK A3

THE NHS VALUES

The NHS Constitution sets out the rights that patients, the public and staff are entitled to, and the pledges that the NHS is committed to achieving. This includes the six NHS Values, which all staff working within the NHS are expected to demonstrate. To complete this task you must research what the NHS Values are and complete the table below.

Value	Description of the value	Example of an NHS worker demonstrating this value

TASK A4

THE STRETCH AND CHALLENGE TASK!

Changes in the NHS

Write a short report on how the NHS in England works. Ensure you include:

- Why the NHS needs to change
- The changes brought about by the Health and Care Act 2022 to include:
 - Integrated Care Systems
 - Integrated Care Boards
 - Integrated Care Partnerships
- How the NHS is funded

Ensure that the quality of your written communication is as good as it can be by paying attention to:

- Correct spelling and use of appropriate key words
- Using grammar effectively to convey your meaning
- Structuring your response in a clear and logical way

Help with this task:

This animation from the King's Fund, 'How does the NHS in England work and how is it changing?' will help you.



Write your report here



TASK B1

ALL LIVING THINGS ARE COMPOSED OF CELLS

In GCSE science you will have learned about plant and animal cells. Can you label the parts of the animal cell below?

STEP 1...

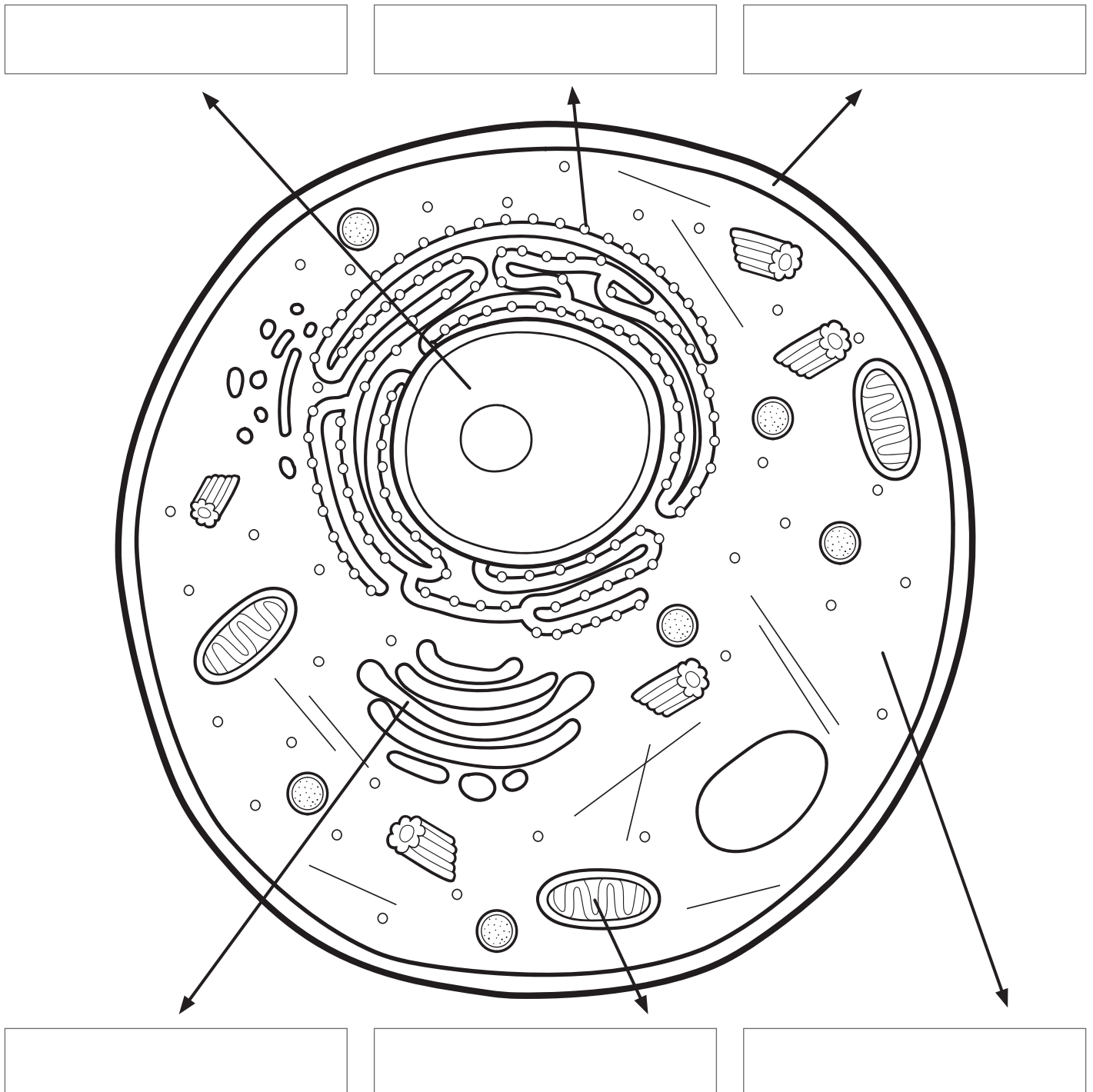
What do you know already?

Use a black pen to complete as many terms as you can from your pre-existing knowledge.

STEP 2...

How good are your research skills?

Use a different coloured pen to fill in the gaps by using the internet to research.



TASK B2

ORGANS OF THE HUMAN BODY

How many of the organs shown below do you recognise? Can you label them?

STEP 1...

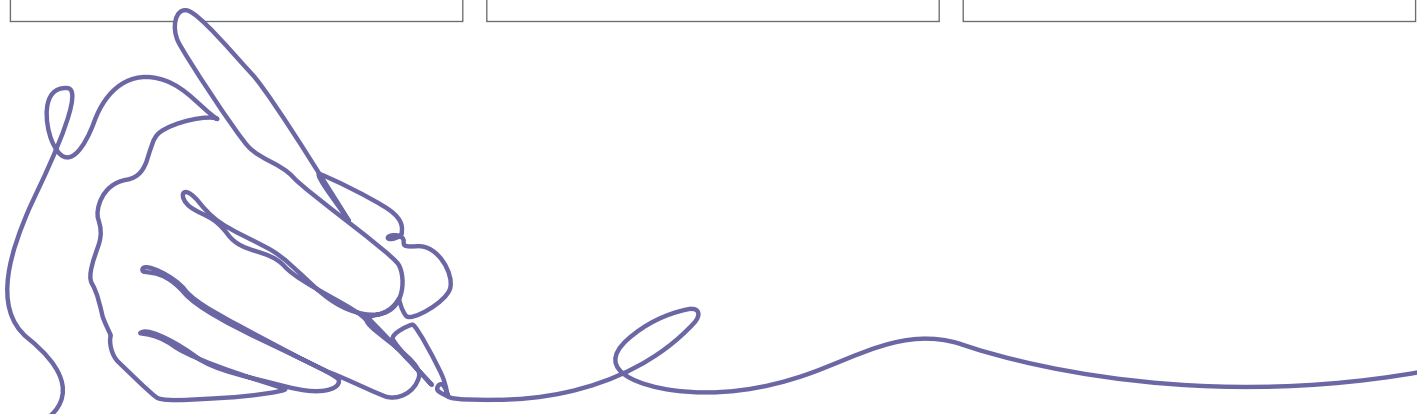
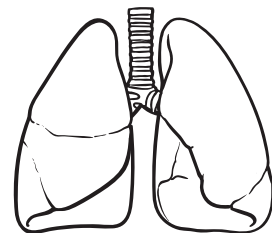
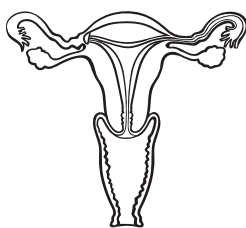
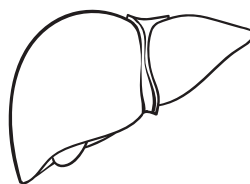
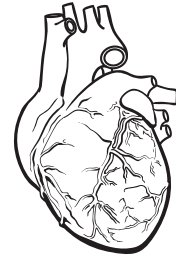
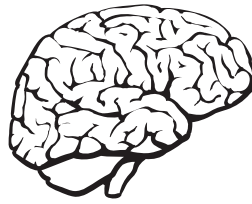
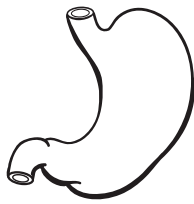
What do you know already?

Use a black pen to complete as many terms as you can from your pre-existing knowledge.

STEP 2...

How good are your research skills?

Use a different coloured pen to fill in the gaps by using the internet to research.



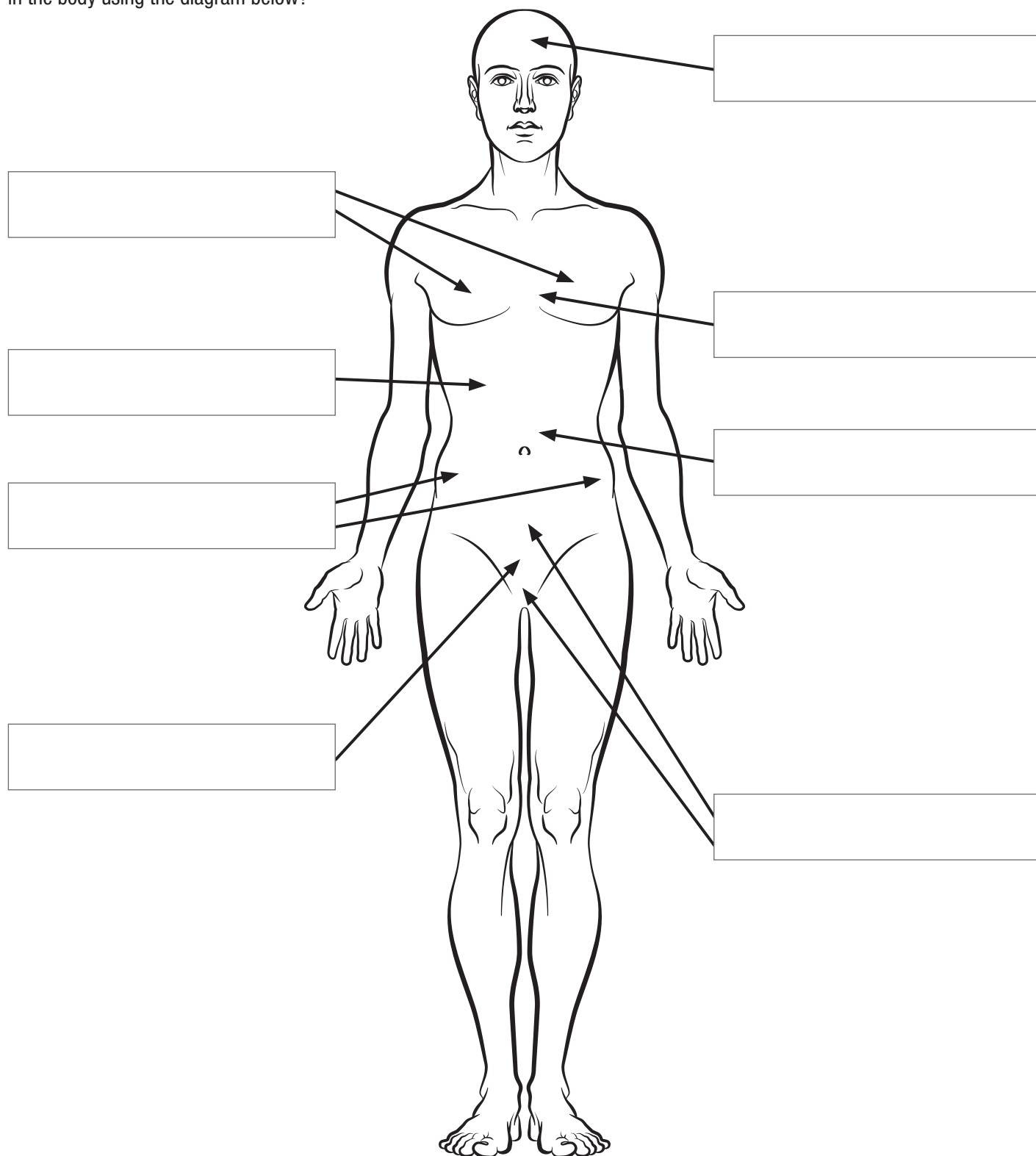
TASK B2 *Continued*

ORGANS OF THE HUMAN BODY

STEP 3...

Extension task!

Can you indicate where each organ is found in the body using the diagram below?



TASK B3

DISEASES AND DISORDERS OF THE CARDIOVASCULAR SYSTEM

The organs of the body are organised into body systems. These body systems carry out important physiological functions and processes both in isolation and in conjunction with other body systems. Conduct research into the diseases and disorders of the cardiovascular system, to help you complete the table.

Help with this task:

The British Heart Foundation 'Heart and Circulatory Conditions' pages will help you here:



Disease or disorder	Description	Available treatments
Coronary Heart Disease (CHD)		
Stroke		
Heart Attack		
Heart Failure		

TASK B4

THE STRETCH AND CHALLENGE TASK!

Reducing the risk of Coronary Heart Disease (CHD)

Write a short report on how individuals can reduce their risks of developing coronary heart disease (CHD). Ensure you include:

- Some information which is numerical (numbers). For example:
 - Number of people living with CHD in the UK
 - Number of people who die from CHD
- An explanation of the major risk factors for CHD
- A description of how individuals can reduce their risks
- The role of the healthcare sector in reducing the risks of CHD in individuals

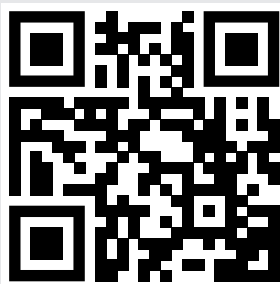
Ensure that the quality of your written communication is as good as it can be by paying attention to:

- Correct spelling and use of appropriate key words
- Using grammar effectively to convey your meaning
- Structuring your response in a clear and logical way

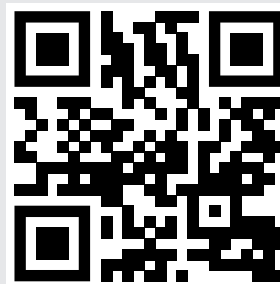
Help with this task:

You can use the British Heart Foundation pages you referred to for task B3. In addition, these pages/documents will also be helpful:

Risk Factors



BHF Statistics Factsheet - UK



Write your report here



WELL DONE!

You have finished your workbook!
Don't forget to complete your reflection on page 2.